

**EARTH CORE**

GEOTECHNICS AND TESTING SERVICES PVT. LTD.

## ***EARTHCORE GEOTECHNICS AND TESTING SERVICES PVT LTD***

EARTHCORE GEOTECHNICS AND TESTING SERVICES PVT LTD

Office: Survey No. 49/1/1, Next to Spinny Showroom, Hirai Sitai Road, Parkhe Vasti, Hinjewadi, Pune, Maharashtra - 411057

SDS SURVEYORS AND ENGINEERS PVT LTD (Subsidiary)

Office No. 12, 2nd Floor, P.S. Angan Society, Magarpatta South Gate, Hadapsar, Pune - 411028

LAB: EARTHCORE GEOTECHNICS AND TESTING SERVICES PVT LTD,

Survey No. 49/1/1, Next to Spinny Showroom, Hirai Sitai Road, Parkhe Vasti, Hinjewadi, Pune, Maharashtra - 411057.

(Pimpri-Chinchwad Municipal Corporation)

08419958450 / 09766342701

| [www.egtspl.com](http://www.egtspl.com) | [project@egtspl.com](mailto:project@egtspl.com) | [monitoring@egtspl.com](mailto:monitoring@egtspl.com) | [lab@egtspl.com](mailto:lab@egtspl.com)

## WELCOME

We, a reputed, growing engineering services establishment engaged in providing its services to arena of construction, Infrastructure and Engineering Industry. We, at the start, operated in the name as “SDS Surveyors and Engineers Pvt Ltd (SDSEPL)”, here and now, is expanding in two dedicated Verticals, viz., “Earthcore Geotechnics and Testing Services Pvt Ltd” (EGTSPL), dealing in ground engineering services such as Geotechnical Investigation, Geophysical Survey, Construction Material Testing Facilities & Associated work, and “SDS Surveyors And Engineers Pvt Ltd” dealing in all types of Land Surveys, Drone Surveys & GIS Mapping.

“Earthcore Geotechnics and Testing Services Pvt Ltd”, providing its services viz. Geotechnical Investigation, Core Drilling, DTH Drilling, Mineral Exploration, Geophysical Survey, Hydrological Survey, Geological Survey, GI Instrumentation, Load testing, Non Destructive Testing (NDT), Drilling and Grouting, Construction Material Testing, dealing PAN INDIA, associated with NABL testing laboratory facility.

And, SDS Surveyors And Engineers Pvt Ltd, providing its services for Topographical Survey, DGPS Survey, Drone Survey, GIS Mapping & all types of Engineering Surveys.

We ensures about smooth operations with on-time deliveries of our contracts by undertaking it with assurance, an accurate refined and budgeted solution thru in-depth analysis, crucial to domain applications for design of relevant kinds of structures.

“DO....KEEP ON DOING....ACHIEVE”

We, “Earthcore Geotechnics and Testing Services Pvt Ltd”, have successfully completed over 40+ projects in short spell and counting....engaging in Ground Engineering Services to infrastructure and engineering projects across India comprises Highway project, Railway Projects, Metro Rail Projects, Airport Projects, Residential, Commercial & Industrial Projects, Solar Projects, Hydro Power Project, Water Supply Projects, STP/ETP Projects and Pipelines, Refineries, Towers, Wind Mill, Chimney projects and many more.....

We preferred that delivery is not the end of our contract and accountability, awaring industry responsibility and endeavour to deliver it with definitive accuracy. We have a professional team leads, Experienced peoples, in house art of state equipment’s and resources to ensures on-time quality completion of our contracts.

For more details, please visit our office/Laboratory.

For any assistance, write us or feel free to contact us and we would be happy to assist you at all time.

“SUCCESS IS THE SUM OF SMALL EFFORTS, REPEATED DAY-IN AND DAY-OUT.”

## “QUALITY DETERMINED BY ACCURACY & COMPETENCY”

It is the people behind us who differentiate us, association of intellectual talent that shapes us and expert dedicated team lead that revolute us. Inspired Employees of the highest calibres and devotions is the backbone of our organisation.

We, “Earthcore Geotechnics and Testing Services Pvt Ltd” , team involve qualified and experienced personnels, they are Geotechnical Engineers, Civil Engineers, Geologists, Surveyors, Supervisors, Draftsmen, Field technicians, Drillers and industry professional /consultants and are ready to encouraged to interact, learn and excel time to time.

We operates from a fully equipped office and lab, based in Wakad & Hadapsar, Pune reveals a strong individual character and willingness to work in all subjective areas, dealing PAN India.

On our part, We, “Earthcore Geotechnics and Testing Services Pvt Ltd”, inspire people to improve their skills in domain through in/out house workshops and external programs where they gain exposure to art of state methodology, developed technology, mechanisms and standards time to time.

## “PERSISTENCE IS THE PATH TO SUCCESS”

## VALUE POLICY

“ACHIEVE FINEST QUALITY, SATISFY CUSTOMER”

We are committed to gratify the domain applications of our customers with highest dedication by providing the best of our services at all time.

## VISION

To be the Eminent Domain Service provider in Marketplace by providing On-Time project deliveries, differentiated by Technically Better Outcomes, Budgeted & Viable commercial statics, maintaining Utmost Safety and Environmental Standards.

## MISSION

Constantly succeeding Sustainable and Profitable business operations.

Achieving Market Leadership in domain by Achieving stable financial performance, utmost solution by in-depth analysis.

Identifying and Building our capabilities in additional service in lines to enhance our offerings.

Developing & Conserving an organisation culture based on Trust, Ethics, Team Capability with Motivated Assurance to Outcomes.

## SPECIALIZATION

- Geotechnical Investigation
- Mineral Exploration
- GI Instrumentation  
(Piezometer/Inclinometer/etc)
- Drilling and Grouting
- DTH Drilling
- Construction Material Testing Facilities
- On-site Technical Assistance
- Geophysical Survey
  - ✓ Electrical Resistivity (ERT)
  - ✓ Seismic Refraction Survey (SRT)
  - ✓ Cross Hole/Down Hole Seismic Test (CHST)
  - ✓ MASW
  - ✓ Streaming Potential (SP)
  - ✓ Electromagnetic Survey (EM)
- Hydrographic Survey
- Geological Survey
- Non-Destructive Testing (NDT)
  - ✓ Schmidt Rebound Hammer
  - ✓ Ultrasonic Pulse Velocity Tester
  - ✓ Cover Meter/ Vibration Meter
  - ✓ Concrete Core extractor (75--150 mm. Dia)
  - ✓ Half cell potentiometer
  - ✓ Endoscopic Inspection (Borescope)
  - ✓ Slab Load Test / Strain Gauge
  - ✓ Carbonation Test
  - ✓ Concrete Test Hammer
- Drone Survey
- Topographical Survey
- DGPS Survey
- GIS Mapping
- Hire of Survey Instruments
- In-Situ Testing:
  - ✓ Vane Shear Test
  - ✓ California Bearing Test (CBR)
  - ✓ Pressure Meter Test
  - ✓ Block Vibration test (BVT)
  - ✓ Plate Load Test (PLT)
  - ✓ Core Cutter & Sand Replacement for Density
  - ✓ Static Cone Penetration Test (SCPT)
  - ✓ Dynamic Cone Penetration Test (DCPT)
  - ✓ CPTu/ECPT Block Vibration Tests (BVT)
  - ✓ In-situ Permeability Test/Pump-in Test/Pump-out Test
  - ✓ Constant Head Method/Falling Head Method
  - ✓ Percolation Test (In trial pit)
- Pocket Penetrometer Test
- Micro-Piling Work
- NABL Laboratory Testing Facilities

# CLIENTELES

adani



MF world





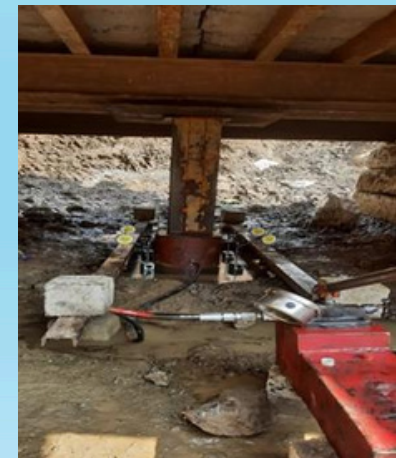
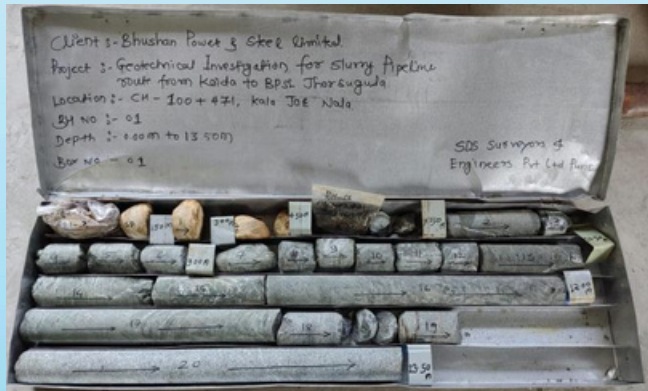
# OUR PROJECTS







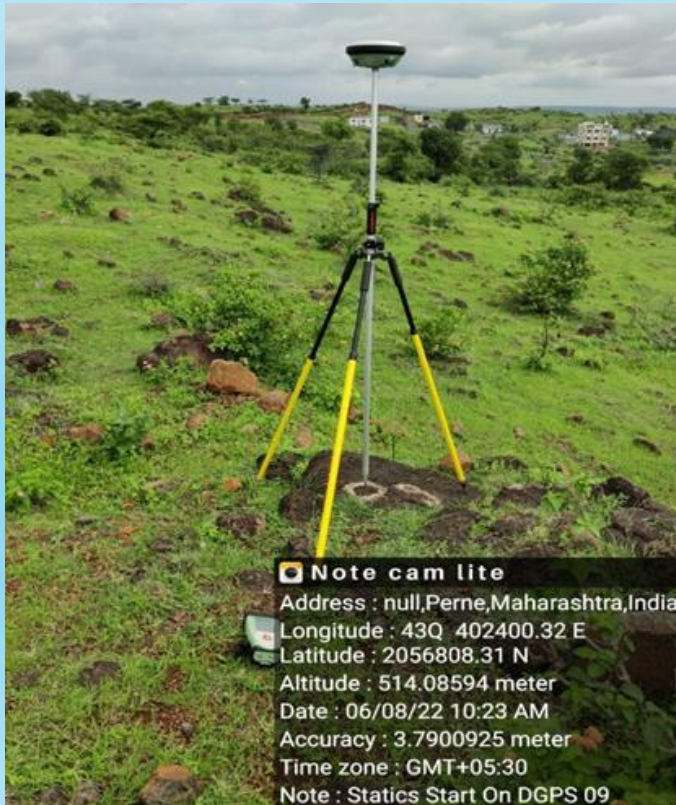
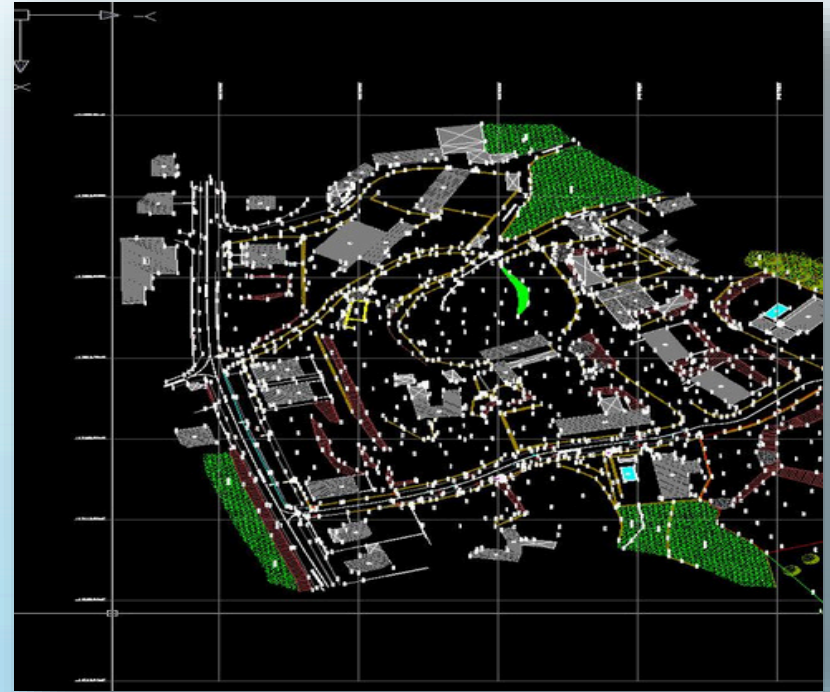




















# THANKYOU



project@egtspl.com | lab@egtspl.com



www.egtspl.com



## Reach Us:

### **Earthcore Geotechnics And Testing Services Pvt Ltd**

Office: Survey Number :49/1/1, Hirai-Sitai Road , Hinjewadi,  
Teh: Mulshi, Dist.: Pune - 411057

### **Lab: Earthcore Geotechnics And Testing Services Pvt Ltd**

Survey Number :49/1/1, Hirai-Sitai Road , Hinjewadi, Teh:  
Mulshi, Dist: Pune - 411057 (Pimpri-Chinchwad Municipal  
Corporation)

### **Division : SDS Surveyors and Engineers Pvt Ltd**

Office No. 12, 2nd Floor, P.S. Angan Society, Magarpatta South  
Gate, Hadapsar, Pune - 411028



**Mr. D. J. Mahajan: 08419958450 (Director-Geotech)**

**Mr. Suresh Gurav: 09766342701 (Director-Surveys)**

**EARTH CORE**

GEOTECHNICS AND TESTING SERVICES PVT. LTD.

**SDS**  
SURVEYORS & ENGINEERS